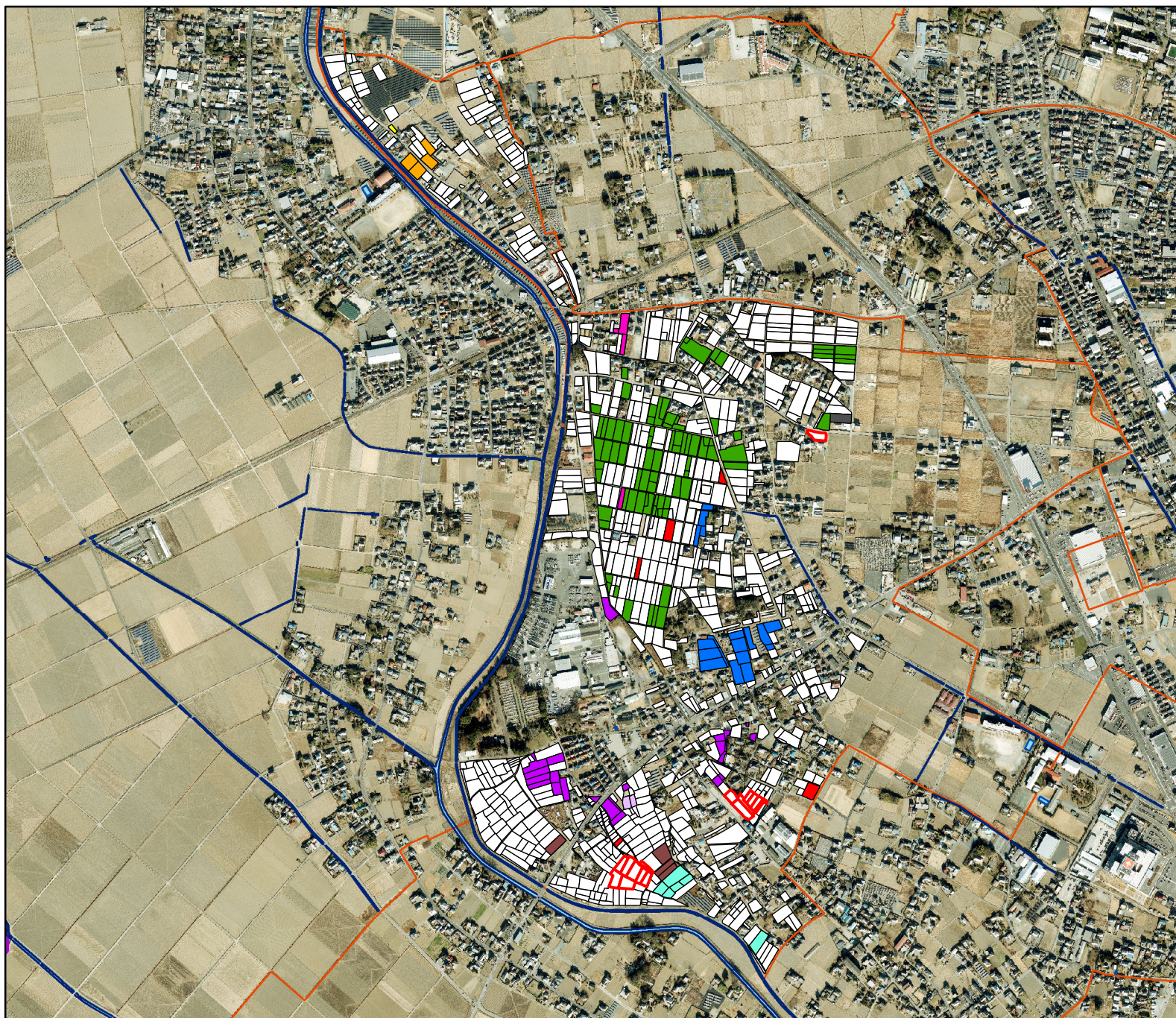

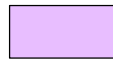



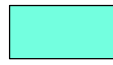





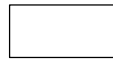



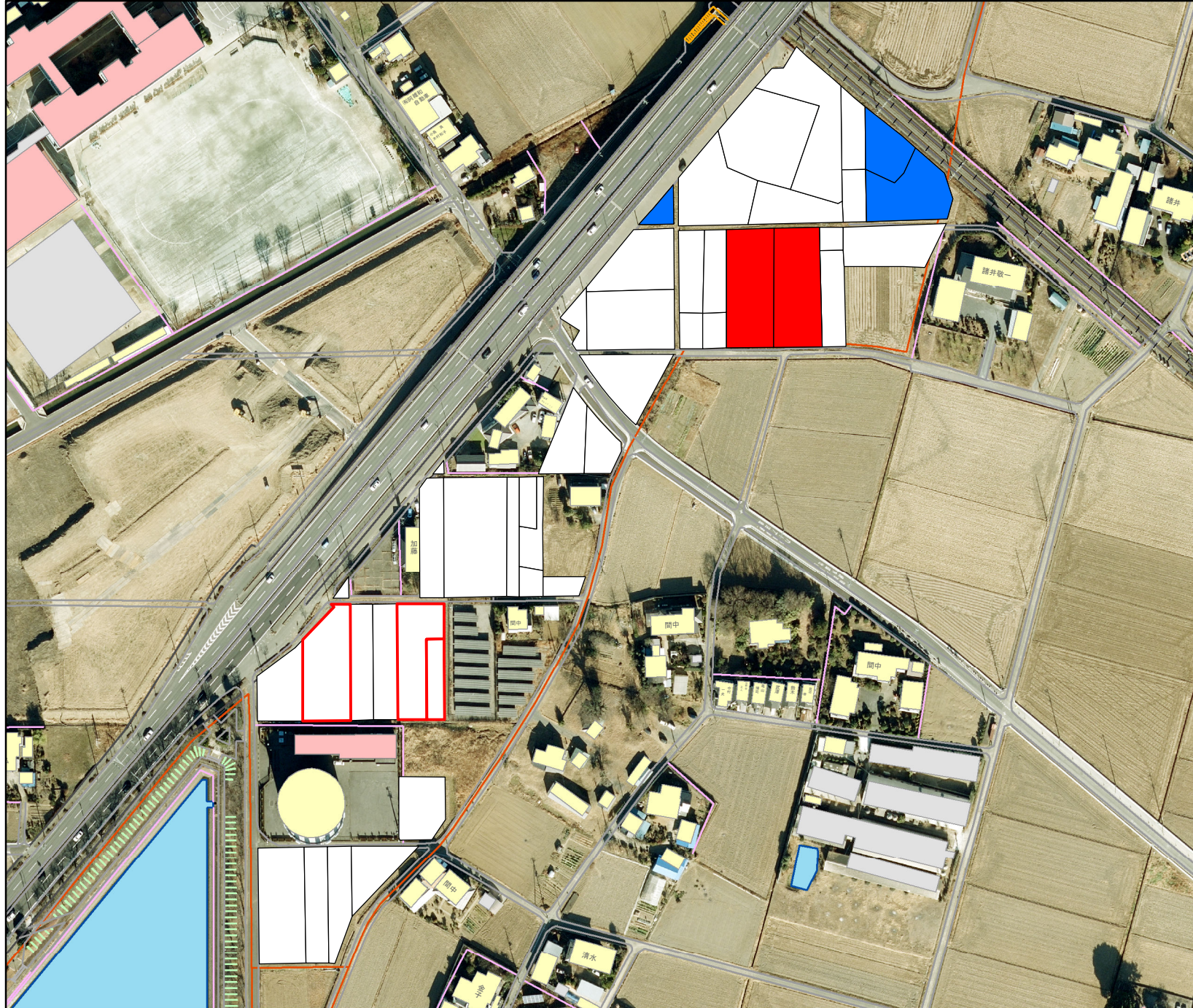
岩瀬(上岩瀬)地区



凡例

- | | |
|---|------|
|  | 12 |
|  | 11 |
|  | 7 |
|  | 5 |
|  | 3 |
|  | 1 |
|  | 16 |
|  | 17 |
|  | 13 |
|  | 8 |
|  | 9 |
|  | 意向不明 |
|  | 検討中 |

岩瀬(中岩瀬)地区



凡例



2



4

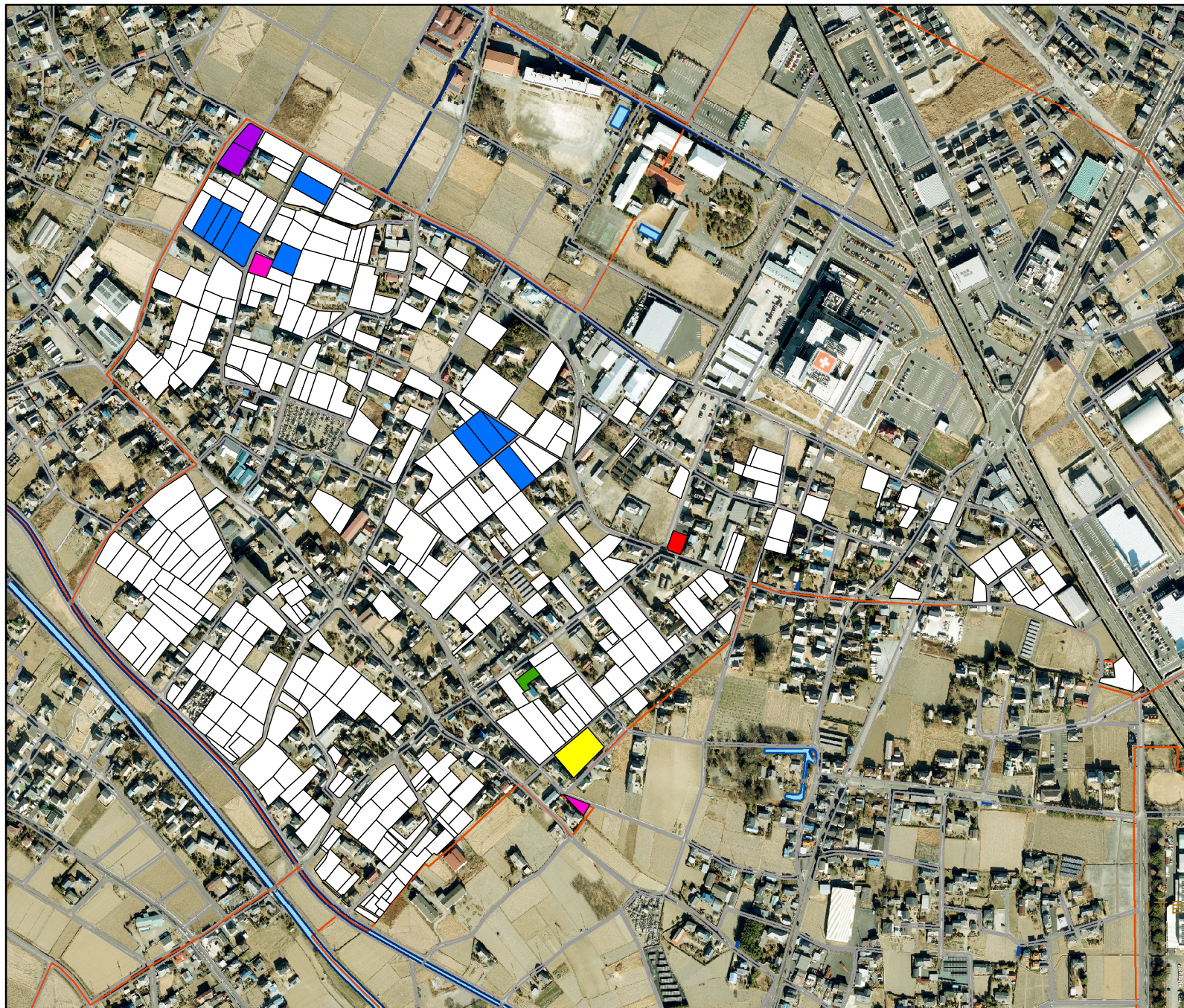


意向不明










検討中

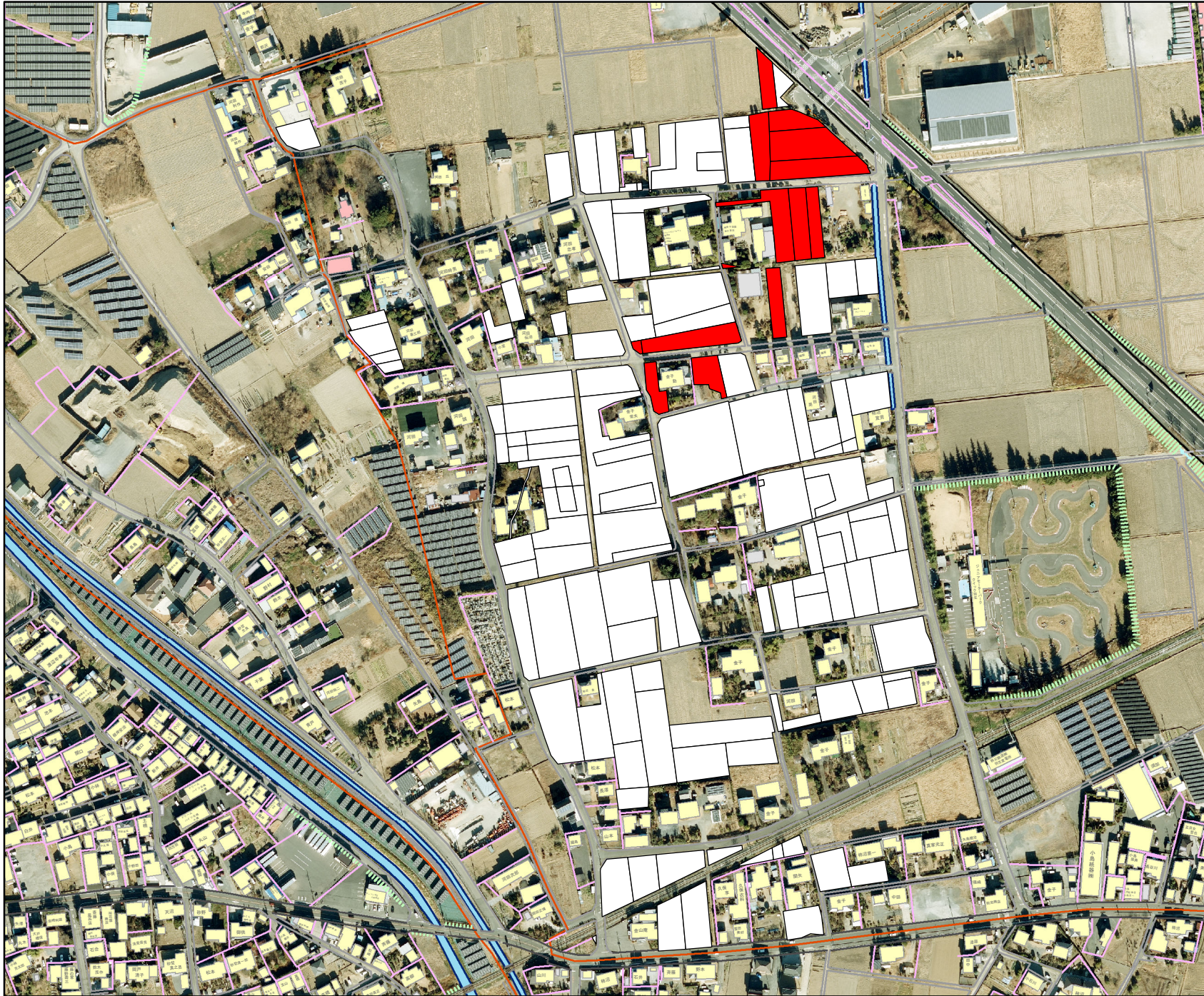
岩瀬(下岩瀬)地区



凡例

	17
	10
	15
	11
	12
	9
	意向不明

岩瀬(桑崎)地区



凡例



3



意向不明

岩瀬(小松)地区



凡例

